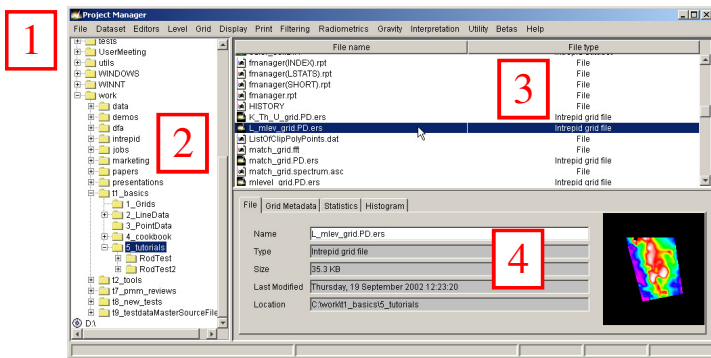


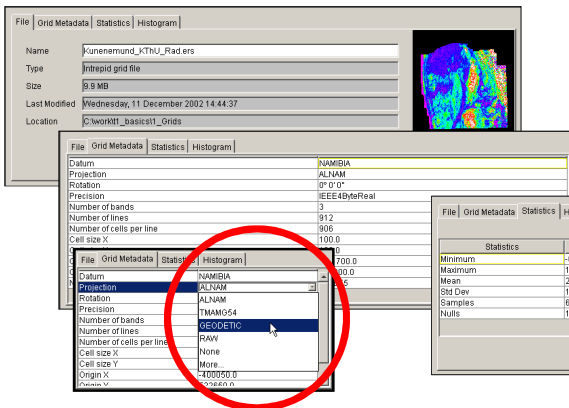
INTREPID Project Manager

- the smart Explorer to *manage* your datasets



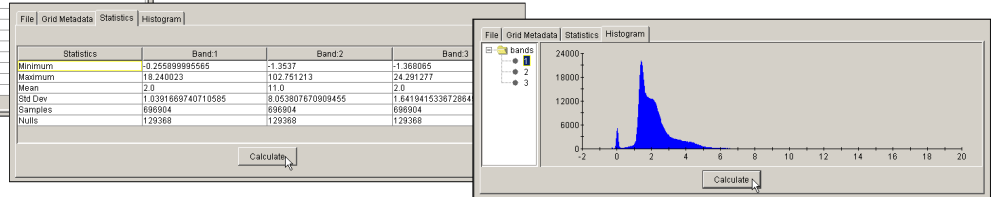
1. Main menu - launch Intrepid Processes
2. Navigate disks / directories
3. Manage files – rename, copy, delete ...
4. Preview Line, Point and Grid datasets, review statistics & maintain metadata
5. Vector and Tensor data type aware !

Dataset preview/maintenance functionality ...



Grid Datasets

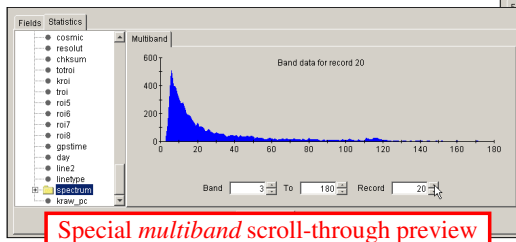
- Basic file details, and a quick *preview thumbnail*
- View *grid metadata*, and *edit Datum / Projection*
- Calculate *statistics*, view multi-band statistics
- Choose a band, and calculate its *histogram*



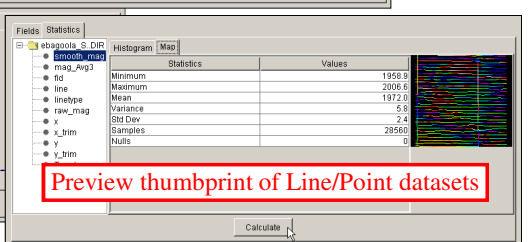
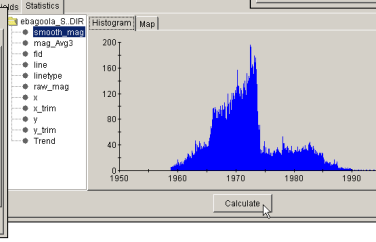
Line / Point Datasets

- View all dataset *fields*, and their key *metadata*
- Edit the Intrepid Alias, Datum, Projection with simple, drop-down lists. Special Datum/Projection dialog for the X, Y Alias
- Select any field, and calculate *statistics ...* or *histogram*
- Scroll through preview of *multiband* fields (eg. 256 ch Rad)

Field	Alias	Datum	Projection	Precision	Default Format	Export Null As
smooth_mag				IEEE8BytReal	16.2	9999
mag_avg3				IEEE8BytReal	16.2	9999
fid	Fiducial			Signed32BitInteger	6.0	9999
line	LineNumber			Signed32BitInteger	6.0	9999
linetype	LineType			Signed16BitInteger	9.0	9999
raw_mag				IEEE8BytReal	7.2	9999
x	X	ACQ66	TMAMG54	IEEE8BytReal	16.2	9999
y	Y	ACQ66	TMAMG54	IEEE8BytReal	16.2	9999
x		ACQ66	TMAMG54	IEEE8BytReal	16.2	9999
y		ACQ66	TMAMG54	IEEE8BytReal	16.2	9999
Trend				IEEE8BytReal	16.2	9999



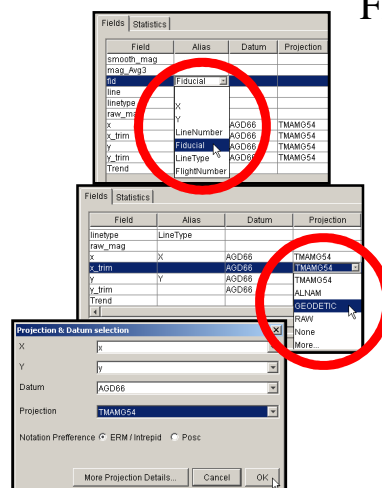
Special multiband scroll-through preview



Preview thumbnail of Line/Point datasets

Edit Alias, Datum, Projection

- Use simple drop-down lists to assign Intrepid *aliases* to fields
- The Datum/Projection drop-down lists show the ten *most recently used*, and commonly used ones
- Choose "More ..." to open a special Datum/Projection dialog for the complete Datum/Projection list



File Types include Geosoft, Oracle DB

- All Intrepid tools have been modified to allow *direct* read / write access to additional file types ...
- Line / Point Data
 - Intrepid's traditional PD database
 - Geosoft Oasis DB (*.gdb)
 - Oracle and other relational databases
- Grid Datasets
 - ERMMapper / Intrepid (*.ers)
 - Geosoft (*.gri)
 - NetCDF
 - GIS Data sets

For more information ...