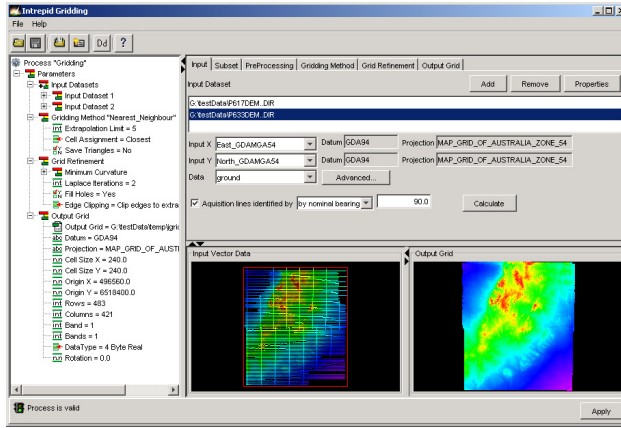


INTREPID Gridding

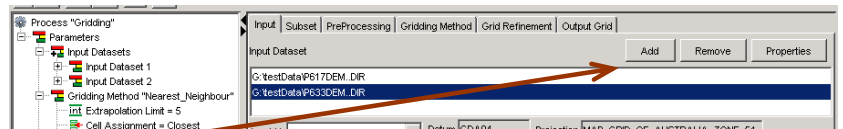
- World renowned best practice gridding



1. Select input data
2. Choose Gridding method
3. Configure output grid settings
4. Hit "Apply"

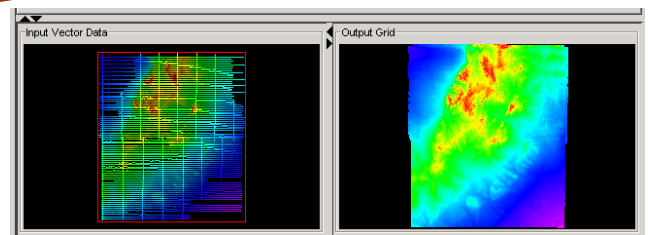
- Flexible multi-dataset support for potential fields
- Fully integrated data model / audit trail / batch processing
- Vector / Tensor gridding support
- Variable data-sampling density (adaptive)
- Akima spline
- Nearest neighbour triangles
- Enhanced Minimum curvature
- Tensor Spherical Interpolator

Create one grid from many vector datasets....

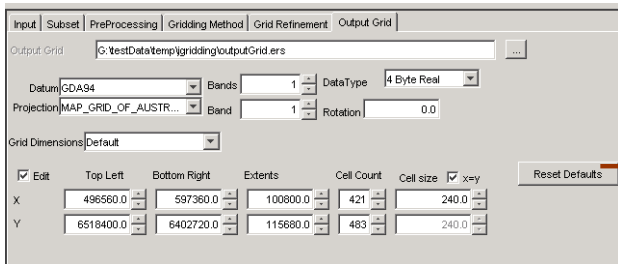


With one simple click of the 'Add' button you can include more data

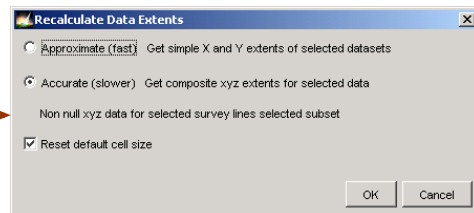
Before and after pictures compare the input dataset collection with the gridded data



Customize grid extents and dimensions.

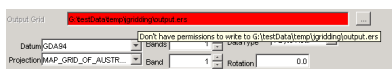


Or let *INTREPID* do the hard work and figure out the sensible values



Intuitive interface

- Colour coded status display

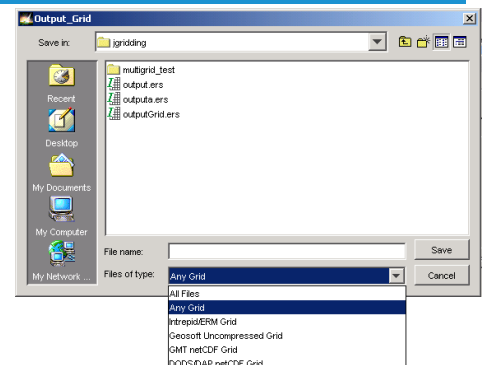


- Informative status messages

Don't have permissions to write to C:\testData\temp\gridding\output.ers

Output types

- Geosoft grids
- NetCDF grids
- ERMMapper grids
- DODS grids



For more information ...

Sales
Intrepid Geophysics
 Suite 110, 3Male Street,
 Brighton (Melbourne)
 Victoria 3186 AUSTRALIA

Tel: +61 3 9593 1077
 Fax: +61 3 9592 4142
 Email: info@intrepid-geophysics.com
 Web: www.intrepid-geophysics.com