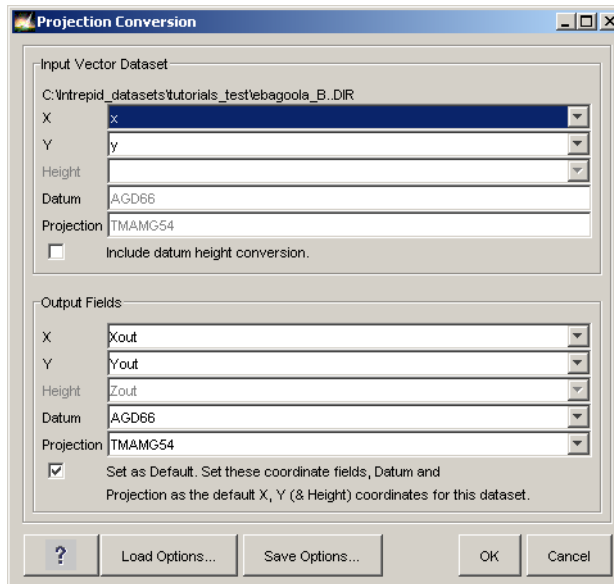


Datum and Projection Utility (T13)

The Datum and Projection Conversion Utility enables you to transform the geolocation of a dataset from one datum to another or from one projection to another (or both)



The tool has an intuitive user interface.

Before starting the tool, in the Project Manager, select the dataset that you want to process.

You can:

- Load an existing job file for projection conversion
- Change settings manually:
 - Assign the **X** and **Y** alias for the input dataset
 - Specify output geolocation field names for results of process (Create new or or select existing fields)
 - Specify output datum and projection
 - Specify whether to set the output geolocation fields to be the new default geolocation fields for the dataset (that is, specify whether to assign the **X** and **Y** alias to the output geolocation fields or leave the aliases assigned to the input geolocation fields)
- Save a job file with current settings for use later in batch or interactive mode.